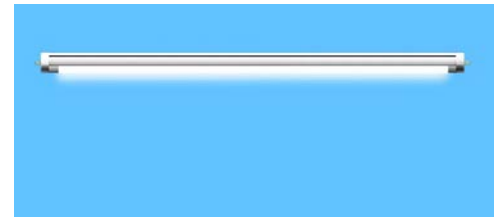


AOD LED tube light is an environment-friendly semiconductor lighting which possesses a number of advantages over the conventional ones such as no flashing, soft light and high color-rendering index that are favorable for the user's eyesight and physical health. With general-standard design of the structure, AOD LED tube can directly replace the conventional fluorescent tube light without any external driver or electric power, and can be widely used in common interior lighting places.



Characteristics

- **Energy saving:** Compared with the conventional fluorescent tube light, the power consumption saving rate is over 60% under the same illumination.
- **Eco-friendly:** No UV or IR radiation, no mercury or other harmful materials.
- **Long Lifetime:** 50000hrs to 80000hrs, 10 times longer than the conventional fluorescent tube light.
- **High Luminous Efficacy:** using the high luminous efficacy and high reliability SMD light source.
- **Easy to install:** totally matching with the fixture of the conventional fluorescent tube light.

Recommended Applications

The AOD LED tube lights are suitable for many kinds of applications, such as the general illumination for homes, offices, restaurants, hotels, meeting rooms, factories, malls, supermarkets, underground garages, warehouses, parking lots, subway stations etc., almost anywhere you need general indoor lighting.

Product Categories

Part No.	Power of Light source	Operating Voltage	Optical Cover	Weight	Lamp Base/ Tube Diameter
AL-L06-BT	6W	AC 220V	transparent/ diffused	250±10g	G13/T10
AL-L09-BT	9W	AC 220V	transparent/ diffused	250±10g	G13/T10
AL-L10-BT	10W	AC 220V	transparent/ diffused	330±10g	G13/T10
AL-L12-BT	12W	AC 220V	transparent/ diffused	450±10g	G13/T10
AL-L15-BT	15W	AC 220V	transparent/ diffused	450±10g	G13/T10
AL-L18-BT	18W	AC 220V	transparent/ diffused	450±10g	G13/T10
AL-L24-BT	24W	AC 220V	transparent/ diffused	450±10g	G13/T10
AL-L28-BT	28W	AC 220V	transparent/ diffused	450±10g	G13/T10

You can get more products information from: www.aodevices.com

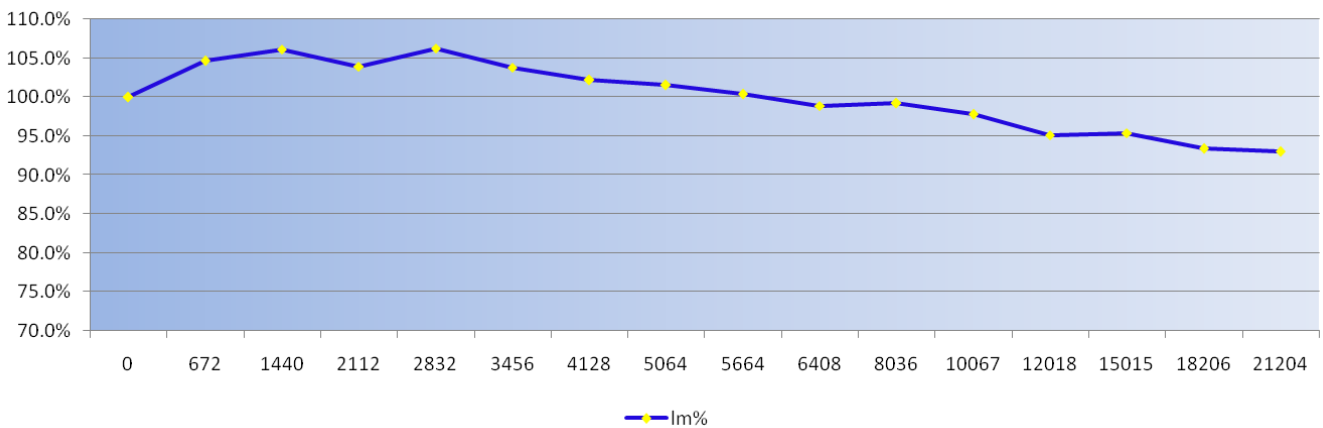


Technical Specifications

Item	Symbol	Min.	Typ.	Max.	Test Conditions	Notes
Working Voltage (V)	Vin	AC185	AC220	AC265		
Working Frequency (Hz)	F	47	50	63		
Light Power (W)	Pout	16.6	18.0	19.4	AC220V, 25°C	
Input Power (W)	Pin	18.8	20.5	22.1	AC220V, 25°C	
Power Factor	PF	0.88			AC220V, 25°C	
Luminous Flux (lm)	Φ		1905		CCT: 6300±200K, Transparent cover	
Luminous Flux (lm)	Φ		1765		CCT: 6300±200K, Diffused cover	
CRI	Ra	70	75	80		
CCT (K)	CCT	2700		6500		Optional ¹
Working Temperature (°C)	Temp	-20		45	AC220V	
Lifespan (hrs)	MTTF		50000		AC220V, 25°C	Affected by operating environment
Weight (g)		440	450	460		Not including package
Lamp Base / Tube Diameter		G13 / T10				
Dimensions		L1198×D30.0mm				

Note: The CCT range of AOD LED tube lights: 2700±150K、3000±180K、3500±200K、4000±250K、4500±250K、5000±300K、5700±300K、6500±500K.

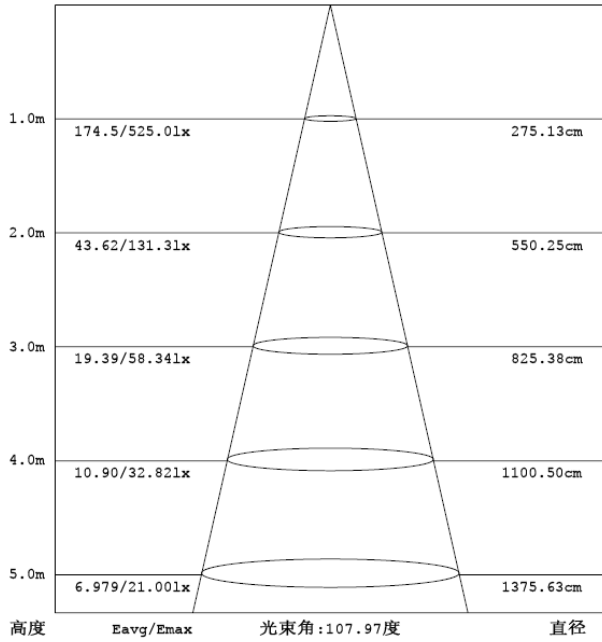
Lumen Depreciation Chart



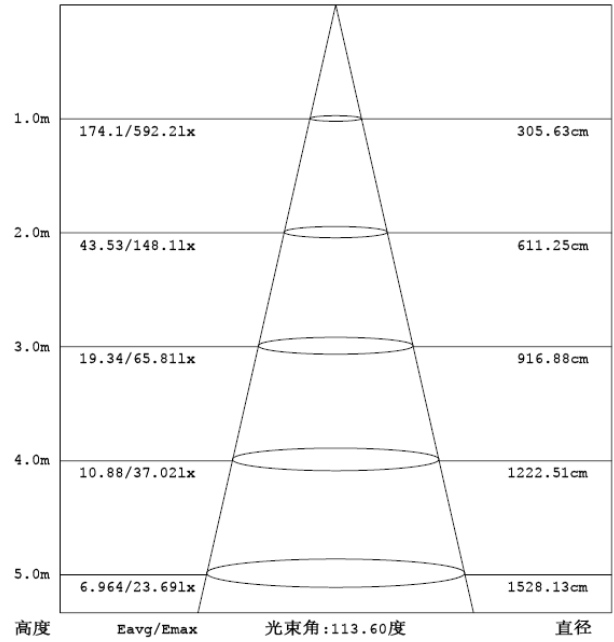
Note: This chart shows the actual test data, which clearly reflects the lumen depreciation of AOD LED tube light. These data were obtained through the test samples worked at 220VAC at the general room temperature and lighted constantly in a long-term. Observers measured the luminous flux, luminous efficiency and other parameters once a month.

Illuminance Diagram

Lighting area and the average illuminance under different projection distance



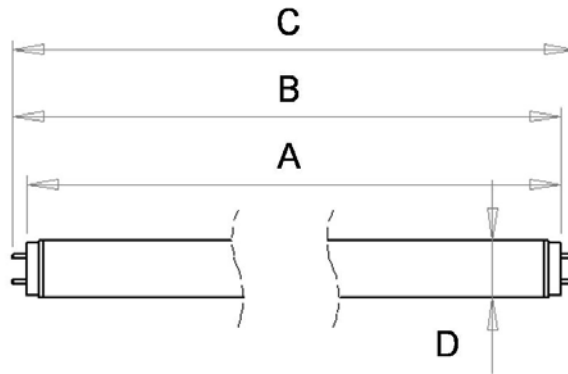
AL-L18-BT (Diffused Cover) illumination diagram



AL-L18-BT (Transparent Cover) illumination diagram

Note: Tested in standard Distribution Photometer laboratory (full dark background). Distance between the LED Tube Lights and detector is 9.0m; CCT: 6300±200K and Ra:80~75 for the sample tested.

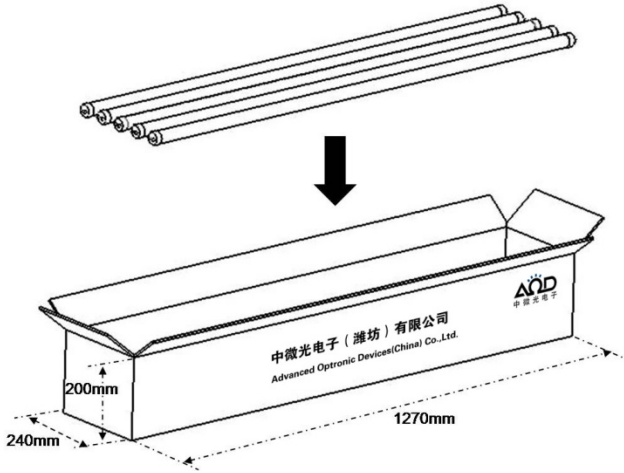
Dimensions



A Max.	B Max.	C Max.	D Max.
1198 mm	1205.5 mm	1213 mm	30.0 mm



Package



Packed in carton, which is divided into 4 layers with 5 pieces per layer, totally 20 pieces LED tubes per carton. The bottom and top of the carton and the space between layers are fixed and protected by foam pads.

Installation Guide

LED Tube lights from AODevices can work by direct connection to Mainssupply. It can also operate together with the Ballast and Starter at the tables of Conventional Fluorescent Lamp. We do not recommend the latter for some unnecessary power consumption will be added.

➤ **Recommended installation steps**

- 1: Remove the starter of the conventional tube fixture.
- 2: Remove the Ballast, or short it out using wires.
- 3: Install the LED tube light into the conventional tube fixture.
- 4: Turn on the switch to light the tube.

➤ **Schematic wiring diagram**



Diagram 1



Diagram 2

If the LED Tube Light is connected to the Mainssupply directly, it can work with every two stitches connecting to the Live wire and Null wire separately.

Attention: 

1. The tube light should be firmly fixed.
2. The connection of the wires should be done by professional electricians referring to the installation guide to avoid dangers.
3. The operating voltage cannot exceed the specified range (185~265VAC).
4. Disassembly of the light without permission is forbidden. For any problem please contact our service department.

After-sale service

If you have any questions or problems in the process of unpacking, installation and use, please contact our Customer Service Department. We will respond within 2 hours, and if necessary, we will promptly send our maintenance professionals to reach your site as quickly as possible to solve your trouble and restore to the normal working condition.

AOD takes guarantee responsibility unless otherwise specified in the following circumstances:

- ✧ The breakdown or the damage is caused by incorrect installation, failure operation or use under the Not- specified working conditions.
- ✧ The damage is caused by accident, abuse or misuse. The breakdown or the damage is caused by customers' unsuitable safekeeping or transportation.
- ✧ The breakdown or the damage is caused by customers' disassembly or changing the spare parts to which are not approved by AOD.
- ✧ The breakdown or the damage is caused by man-made or natural disaster.

Customer Service Center: +86-536-2221111

AOD will constantly improve our production performance and insist on innovation. The information contained in this document is the lately data at the deadline for edition and subject to change without notice.

AOD reserves the right to the interpretation of this document. The pictures shown here is indicative only. If there is inconsistency between the pictures and the actual product, the actual product shall govern.