

The design criteria of the AOD panel light was focused on the essential basic requirements of modern lighting, visibility and eye comfort .With the elimination of the normal mains frequency flicker and with a light energy spectrum based on the human eye requirements the AOD panel light delivers comfortable lighting for all applications.



AOD LED panel light is a new style surface lighting source which is designed by using LCD back light technology LCD back Thanks to the high transmittance light guide plate the light is well diffused in an effort to completely eliminate glare as well as eliminating the use of other light distribution devices such as diffusers .The end result being a soft comfortable light whilst still maintaining lighting levels to comply with world standards .

The unique thin design renders itself to be used as a retrofit or as new installations. The sizes offered are so that the panels can be fitted to existing recessed light ceiling apertures making it a very time and cost effective way of replacing those tired old troublesome tube style light fittings .

Safety features of the AOD panel light include not only the elimination of hazardous substances such as mercury and others found in ballasts and power factor correction devices .The panel itself also has the added feature of being extra low voltage making it safe for authorized installers .

The high efficacy as well as the almost perfect colour rendering index combined with extremely low light loss over long periods (see chart) and virtually no maintenance makes this light an ideal replacement where the old style tube lighting would otherwise be used .In the process achieving considerable savings in power consumption , maintenance and environmentally responsible disposal of mercury filled tubes thus reducing the overheads associated with old style lighting .

The AOD panel light is also designed with modern décor as a prerequisite . The anodic oxidation aluminium alloy frame not only solves the heat-dissipation problem but also makes the whole light a classic clean fuss free appearance enhancing the beauty of light .

LED Panel light Characteristics

- Features: No glare and flare, no shadow, no spot, soft and eye-friendly light
- Light & Thin: only 1.2cm thickness, wide application.
- Eco-friendly & Energy-saving: high efficiency, No UV or IR radiation, low thermal
- Well-distributed illumination: high transmittance light guide plate, well- distributed, and wide angle.
- Stable & durable: long lifespan over 30000hrs, low light decay.
- Convenient installation: Humanization Design, easy installation, in-built or suspending.

LED panel light Scope of Application

LED panel light is applicable for various public places such as department stores, office buildings, airports, factories etc. anywhere you need general indoor lighting.

AOD LED panel lights

Part No.	Outline Dimensions	LED Power	Working Voltage	Lumens (lm)	CCT (K)
PL10-3030	298*298*12.3 mm	10W	AC 90~240V	900~1000	5700/6500
PL15-3060	298*598*12.3 mm	15W	AC 90~240V	1300~1400	5700/6500
PL20-3060	298*598*12.3 mm	20W	AC 90~240V	1700~1800	5700/6500
PL30-30120	298*1198*12.3mm	30W	AC 90~240V	2700~2800	5700/6500
PL40-30120	298*1198*12.3mm	40W	AC 90~240V	3400~3500	5700/6500
PL30-6060	598*598*12.3mm	30W	AC 90~240V	2700~2800	5700/6500
PL40-6060	598*598*12.3mm	40W	AC 90~240V	3400~3500	5700/6500

For more product details, please visit our website www.aodevices.com

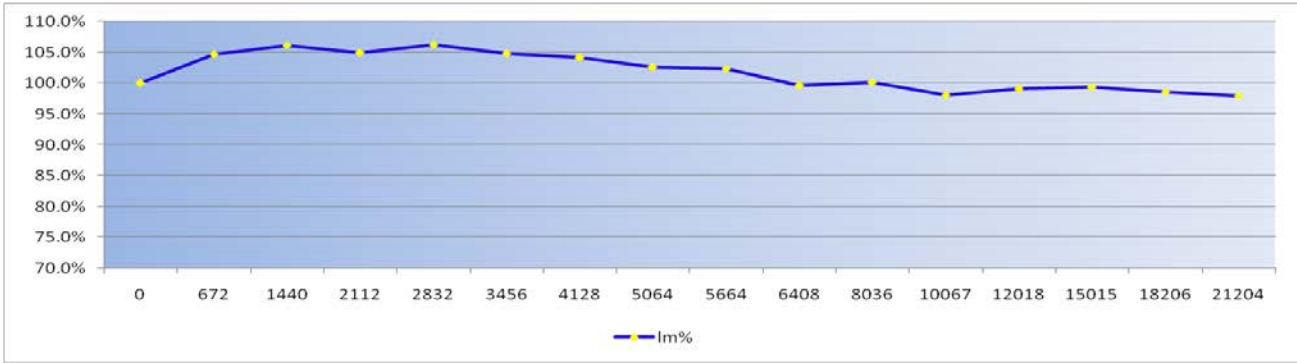
PL40-6060 Parameters

Item	Symbol	Min.	Typ.	Max.	Test Conditions	Notes
Working Voltage (V)	Vin	AC185	AC220	AC265		
Working Frequency (Hz)	F	47	50	63		
Light Power (W)	Pout	39	40	41	AC220V, 25 °C	
Input Power (W)	Pin		44	45	AC220V, 25 °C	
Power Factor	PF	0.97			AC220V, 25 °C	
Luminous Flux (lm)	Φ	3400	>3500		CCT: 5700±200K, Diffuser Plate transmittance≥82%, Haze ≥92%	
CRI	Ra	70	75	80		
CCT (K)	CCT	2700		6500		optional ¹
Working Temperature (°C)	Temp	-20		45	AC220V	
Lifetime (hrs)	MTTF		50000		AC220V, 25 °C	Inference by
Weight (g)			4000			Not including
interface/Pipe diameter	ordinary 2-wire interface					
Frame Dimensions	598*598*12.3mm					

Note: AOD Standard Color Temperature:

2700±150K、3000±180K、3500±200K、4000±250K、4500±250K、5000±300K、5700±300K、6500±500K.

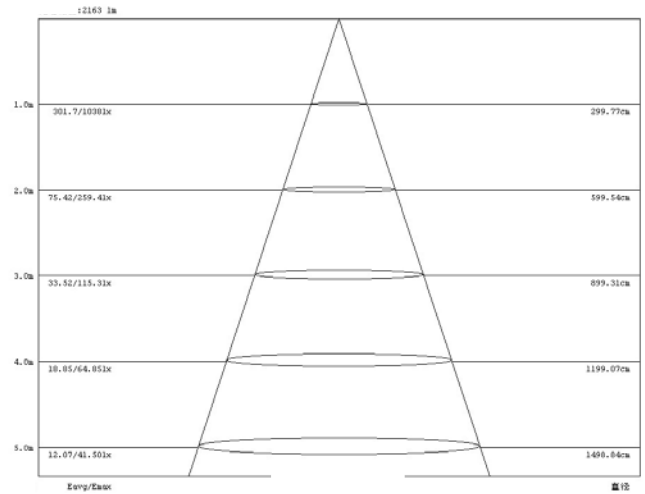
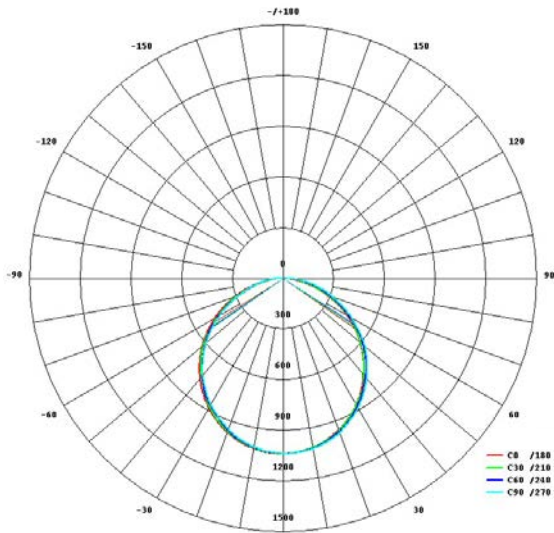
Luminous Flux Maintenance Chart



Note: This chart shows the actual test data, which clearly reflects the lumen depreciation of AOD LED panel light. These data were obtained through the test samples worked at 220VAC at the general room temperature and lighted constantly in a long-term. Observers measured the luminous flux, luminous efficiency and other parameters once a month.

PL40-6060 Effective Illumination Diagram

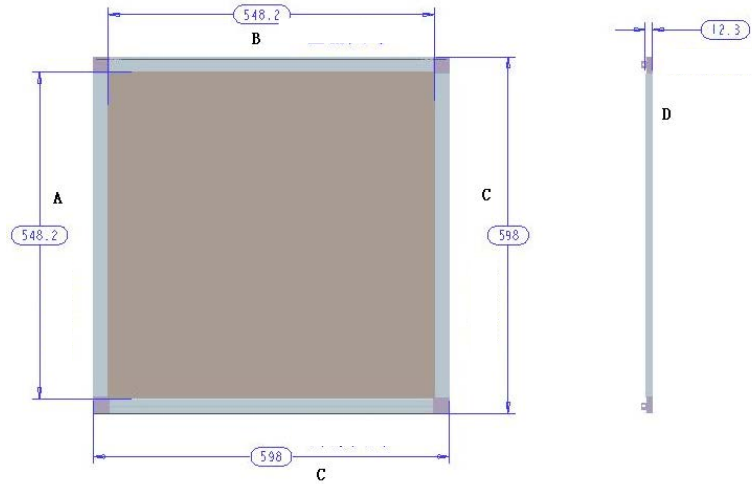
Lighting area and the average illumination from different projection distance



PL30-6060 light distribution curve and illumination diagram (Diffuser Plate transmittance 82%, Haze 92%)

Note: Tested in standard Distribution Photometer laboratory (full dark background). Distance between the LED panel Lights and detector is 9.0m; CCT: 5700±200K and CRI 75~80 for the test samples.

PL40-6060 Structure Dimensions



A Max.	B Max.	C Max.	D Max.
548.2 mm	548.2 mm	598 mm	12.3 mm

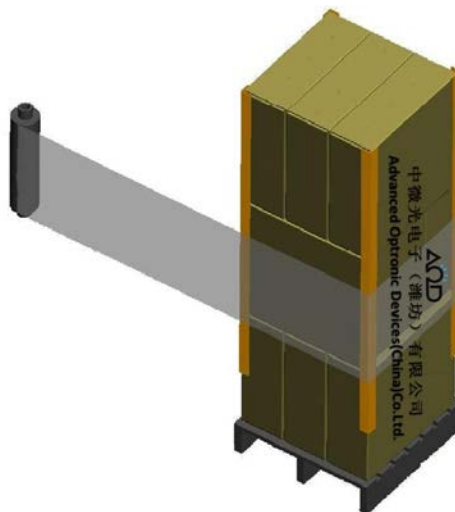
Package information

5pcs/carton.

The products are protected by foams or EPEs from four angles with interlayer foams or EPEs.



9 cartons/ pallet, 45pcs in total



Installation Instructions

1. This product should be installed by trained professional electricians.
2. Please check the integrality of the products when unpack the packing.
3. The distance between this product and any flammable materials must not be less than 0.2m. Make sure the distance between the upper part of the installed light and the ceiling is not less than 2cm. This product must not be installed into ceilings or walls that contain heat-insulating materials. The main cable must not be connected with the low voltage cable or the surface-mounted lights.
4. When laying the cables, make sure the cables and plugs are not subjected to any tensile or twisting forces. Fit the cable tension relieving mechanisms to the connection points of the surface-mounted lights. Do not kink cables. Output cables should be laid separately and at a distance from other cables.
5. After installation, connect the low voltage plug to the switch power supply.
6. Non-professionals are not allowed to disassemble and maintain the products. Our company reserves the right not to provide after-sale service if unauthorized disassembly and maintenance happens to the products.

➤ **Recommended installation Procedures**

1. Put one side of the steel cable into the fixture 2(see accessories below), and set 2 to 5 mm aside. Then, tighten the screw on the fixture 2 with screw-driver.



2. Put the other side of the steel cable through the bigger hole of the 90° fixture (there are big and small holes). Lock the 90° fixtures separately on the four angles of the panel light (if necessary, you can lock the 90° fixture into any screw holes on the back of panel light)



3. Insert the other side of the steel cable into the hole on the top of the fixture 1, push the head of the fixture 1 to adjust the length of the steel cable, thus adjust the position of the whole light.



➤ **Accessories**

<p>1、 Fixture1</p> 	<p>2、 Steel Cable (80cm)</p> 
<p>3、 Fixture2</p> 	<p>4、 90 ° fixture</p> 

Attention: 

1. The LED panel light should be firmly fixed on expected accessories no matter it is embedded or hoisted.
2. The connection of the wires should be done by professional electricians referring to the installation guide to avoid dangers.
3. The operating voltage cannot exceed the specified range (185 ~ 265VAC).
4. Disassembly of the light without permission is forbidden. For any problem please contact our customer

After-sale service

If you have any questions or problems in the process of unpacking, installation and use, please contact our Customer Service Department. We will respond within 2 hours, and if necessary, we will promptly send our maintenance professionals to reach your

site as quickly as possible to solve your trouble and restore to the normal working condition. AOD takes guarantee responsibility unless otherwise specified in the following circumstances:

- ✧ The breakdown or the damage is caused by incorrect installation, failure operation or use under the Not- specified working conditions.
- ✧ The damage is caused by accident, abuse or misuse. The breakdown or the damage is caused by customers' unsuitable safekeeping or transportation.
- ✧ The breakdown or the damage is caused by customers' disassembly or changing the spare parts to which are not approved by AOD.
- ✧ The breakdown or the damage is caused by man-made or natural disaster.。

Customer Service Center: +86-536-2221111

AOD will constantly improve our production performance and insist on innovation. The information contained in this document is the latest data at the deadline for edition and subject to change without notice.

AOD reserves the right to the interpretation of this document. The pictures shown here is indicative only. If there is inconsistency between the pictures and the actual product, the actual product shall govern.